



GAT MONTHLY MEMBERSHIP PROGRESS REPORT

Results as of: 4/30/2024

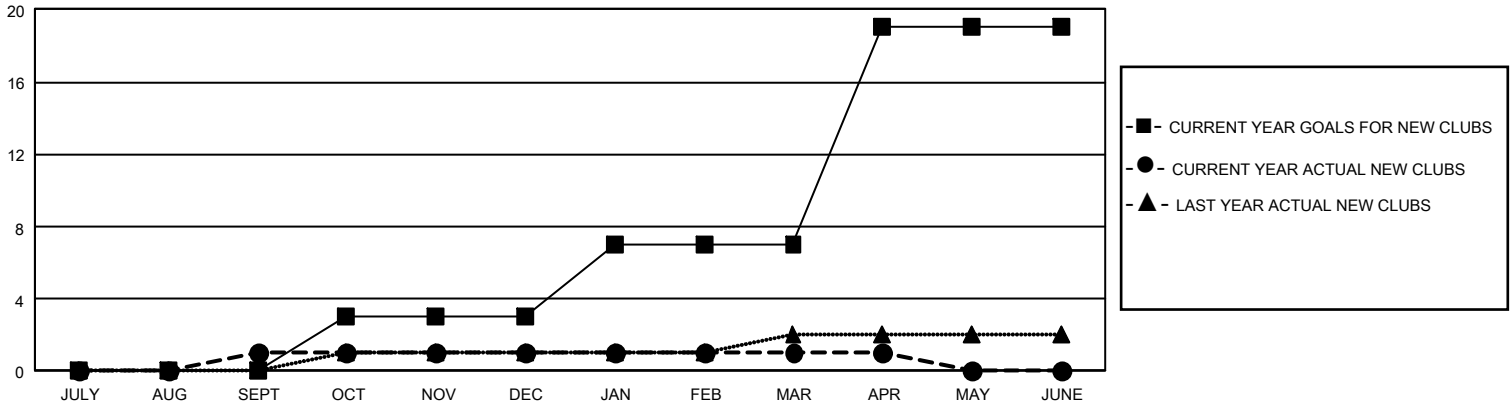
GMT Constitutional Area 4, Group A

REPORT DOES NOT INCLUDE CLUBS IN UNDISTRICTED AREAS.

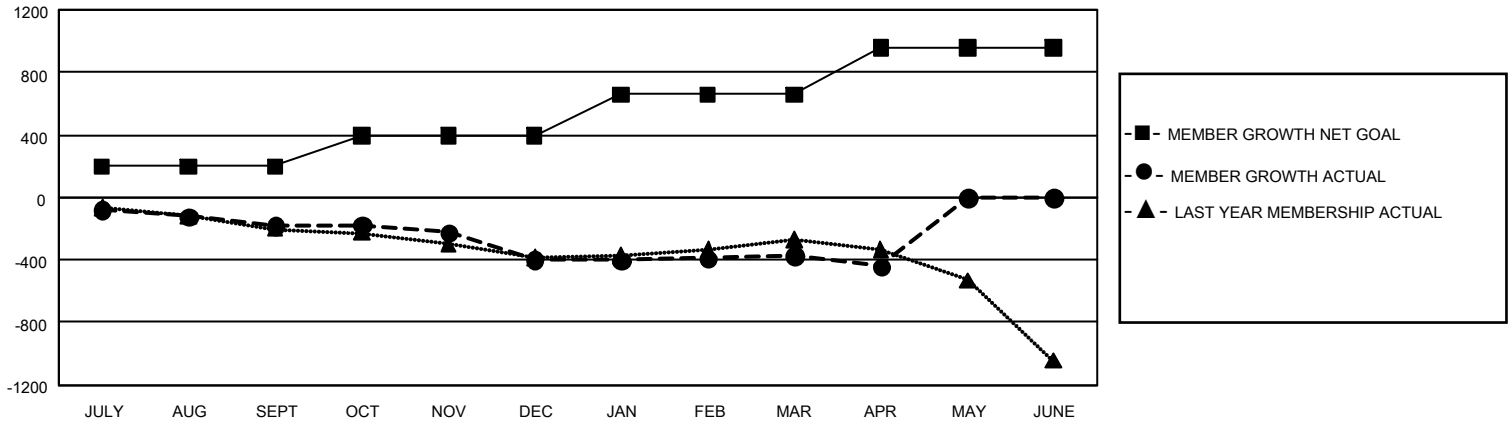
Clubs			
RESULTS FOR 2023-2024			
QUARTER	NEW CLUB GOAL	NEW CLUBS	DROPPED CLUBS
JULY/AUG/SEPT	0	1	9
OCT/NOV/DEC	9	0	3
JAN/FEB/MAR	12	0	3
APR/MAY/JUNE	36	0	2

Members			
RESULTS FOR 2023-2024			
QUARTER	MEMBER GROWTH NET GOAL	MEMBER GROWTH ACTUAL	DROPPED MEMBERS ACTUAL (including transfers)
JULY/AUG/SEPT	198	195	355
OCT/NOV/DEC	199	302	490
JAN/FEB/MAR	262	340	292
APR/MAY/JUNE	300	116	176

GOALS AND ACTUAL NEW CLUBS CUMULATIVE



GOALS AND ACTUAL MEMBERS CUMULATIVE



DROPPED CLUBS: 17	424 CLUBS OF 953 ADDED 1 OR MORE NEW MEMBERS	<u>GENDER DISTRIBUTION</u>	
<u>DROPPED MEMBERS</u>		MALE	15,258 (75.17%)
DECEASED	205	FEMALE	5,038 (24.82%)
CLUB CANCELLED	21	NON BINARY	0 (0.00%)
OTHER	1,087	PREFER NOT TO ANSWER	2 (0.01%)
TOTAL	1,313	TOTAL FAMILY UNIT MEMBERS	631
	CLICK HERE FOR CUMULATIVE MEMBERSHIP DATA	FAMILY MEMBERS PAYING HALF DUES	317